



LUER LOCK INTEGRATED CAP FOR D2F™ PRE-FILLABLE GLASS SYRINGES





LUER LOCK INTEGRATED CAP FOR D2F™ PRE-FILLABLE GLASS SYRINGES

THE PERFECT LInC TO YOUR



Drug, Fill-Finish, End-user

Drug

Ensuring compatibility between drug and closure

The integrated closure of LInC is offered in a variety of carefully selected rubber formulations (FM27, FM30, 7025, 7028), ensuring compatibility with sensitive drugs.

Fill-Finish

Maintaining container closure integrity

Inherent to the LInC design is the highly accurate fit of the integrated closure and the rigid cap to luer lock D2F glass syringes, thereby maintaining strong container closure integrity.

Fast time to market

D2F-LInC is compatible with existing D2F tub & nest packaging solutions, equivalent to market standards for dimensional, cosmetic, and functional attributes.

End-user

Offering an easy opening

A crucial link in the preparation and administration process thanks to an intuitive and easy opening.



D2F™ PRE-FILLABLE GLASS SYRINGES

FINE-TUNED TO YOUR DRUG REQUIREMENTS!

Defining the right quality and customization for your primary packaging is a complex process. Our Nipro “Quality Levels” form the perfect base to capture and fine-tune your quality and service requirements.

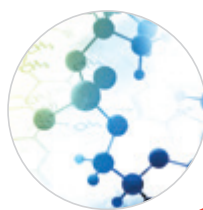
eNgage...

Drugs requiring
extraordinary customization



eNhance..

Large molecules,
Biotechs, Vaccines



eNable.

Small molecules,
Anticoagulants



Level of Customization
& Product Complexity



The right quality for vaccines, biotechs, cosmetics, and ophthalmics

D2F pre-fillable glass syringes with LInC are available in eNhance quality.

Whenever you are confronted with the choice of selecting the optimal quality for large molecules or biologics, D2F pre-fillable glass syringes in eNhance quality meet your specific drug product requirements.

Excellent drug-container compatibility

- Reduced risk of interactions due to low tungsten
- Optimized silicone amount and distribution
- Minimized particle level

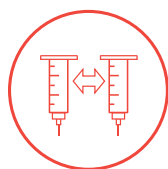
Designed for reliable and safer administrations

- Smooth plunger movement during manual injection
- Easy penetration thanks to controlled needle specifications
- Safer handling of syringes during manual injection

Optimized processability for minimal drug loss

- Precise dimensional & cosmetic aspects
- Increased mechanical durability
- Reliable processability of D2F tubs

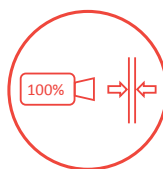
Manufacturing and Inspection highlights



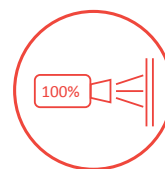
No glass-to-glass
contact



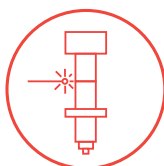
Inspection of silicone
distribution



Dimensional
inspection



Cosmetic
inspection



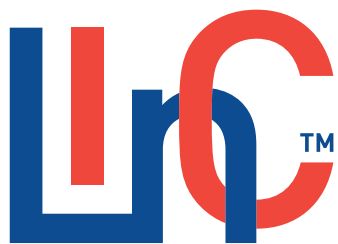
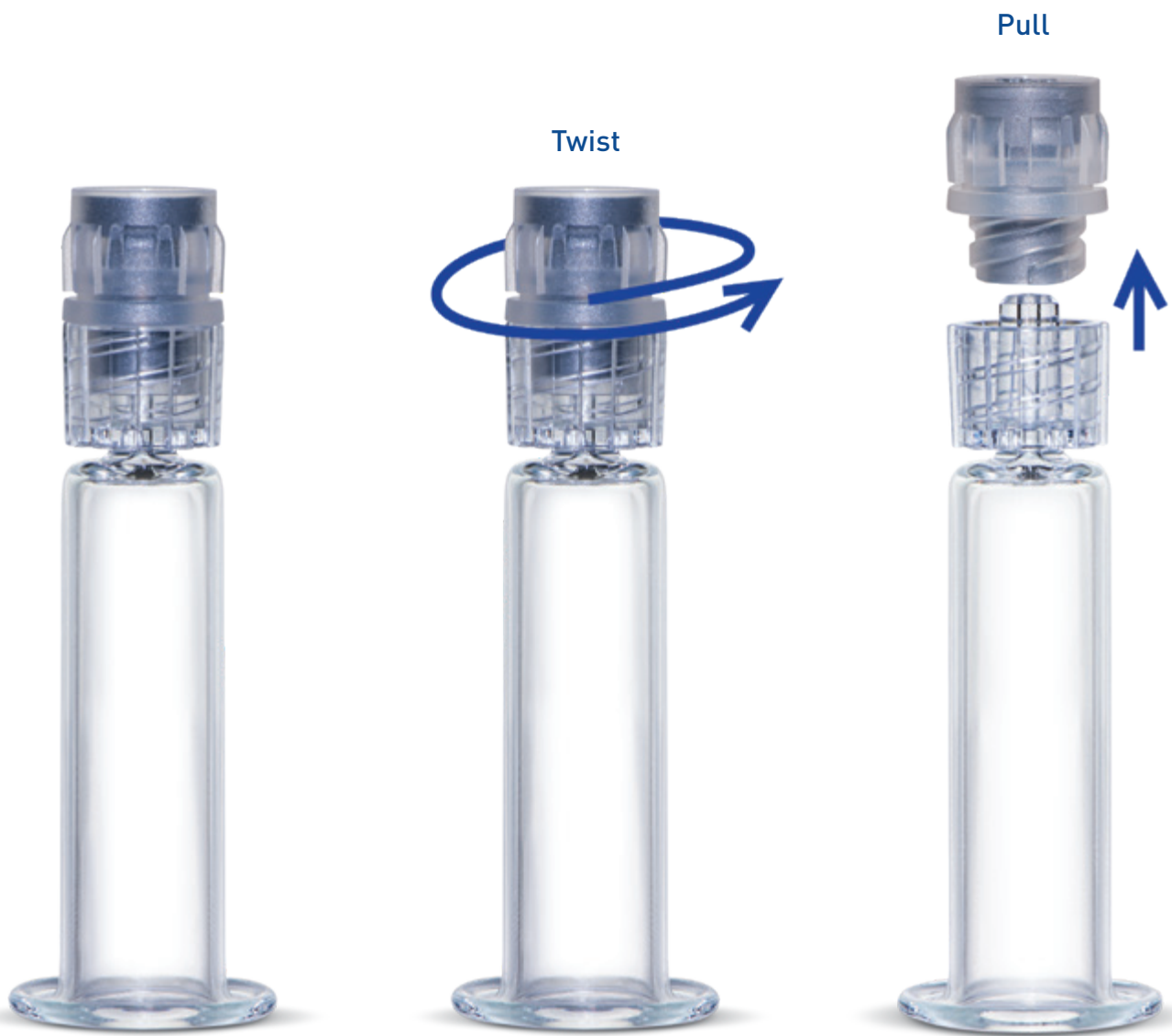
Laser-based
cutting



Dive in
nozzle



Low
tungsten



SIMPLE AND INTUITIVE TO OPEN

LInC - SPECIFICATIONS

Integrated closure (IC)

Description	Material (rubber formulations)
Tip cap to seal the luer cone	West: 7025/65 or 7028/55 Datwyler: FM27 or FM30

Rigid cap (RC)

Description	Material
Screw-in holder for the IC	Polypropylene (PP)

Luer lock adapter (LLA)

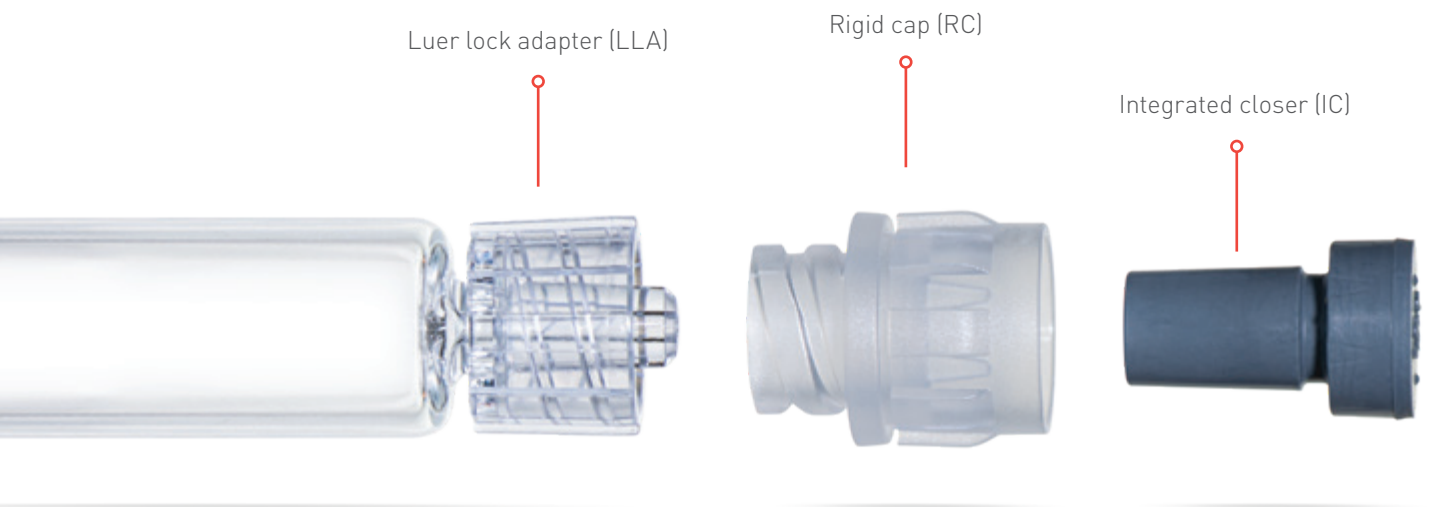
Description	Material
Interface for external accessories	Transparent polycarbonate (PC)

Luer cone

Type
Luer lock cone according ISO 11040-4 / ISO 80369-1

Shelf-life : 36 months (D2F syringes with LInC)

Sterilization : D2F syringes with LInC are certified for EtO sterilization



Nipro PharmaPackaging is specialized in developing and manufacturing advanced pharma packaging products and complete packaging solutions for early development drugs or the enhancement of packaging solutions for existing drugs.

With a worldwide manufacturing footprint of 14 plants, multiple sales offices, and internal lab services, Nipro PharmaPackaging offers an exceptional service platform. Through our personnel, products, and services, Nipro PharmaPackaging enables you to provide a safer and healthier administration to your customers.

Nipro PharmaPackaging is part of Nipro Corporation Japan, established in 1954. As a leading global healthcare company with over 29.000 employees worldwide, Nipro serves the Pharmaceutical, Medical Device, and Pharma Packaging industries.

