



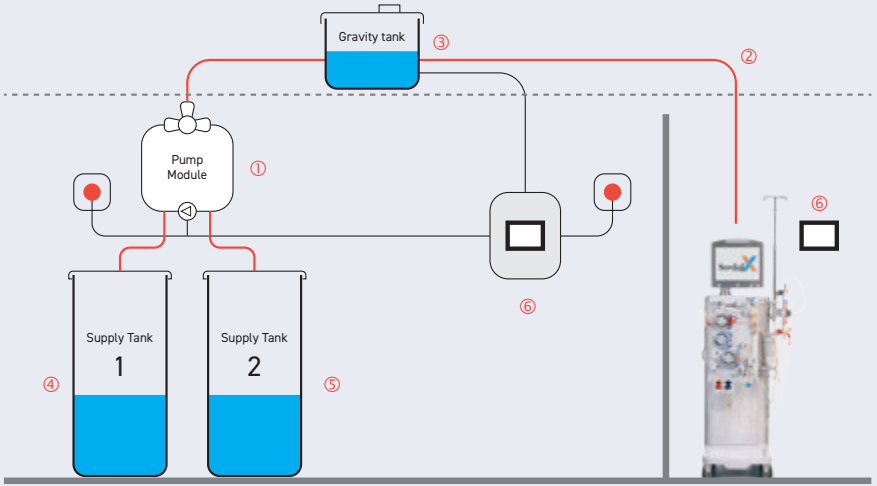
GravineXTMt

CONCENTRATE DELIVERY SYSTEM

GravineXt™

CONCENTRATE DELIVERY SYSTEM

Designed to transfer dialysis concentrates from storage tanks to dialysis machines.



Working principle

1. The pump moves the concentrate from its tank to the gravity tank.
2. From there, the concentrate is automatically delivered to dialysis machines by gravitational force.
3. Sensors in the gravity tank automatically detect when it must be refilled.

Flexible installation

4. GravineXt can be connected to 4 tanks of up to 2 different types of concentrate. For each type of concentrate, one tank is in operation while the other is on standby.

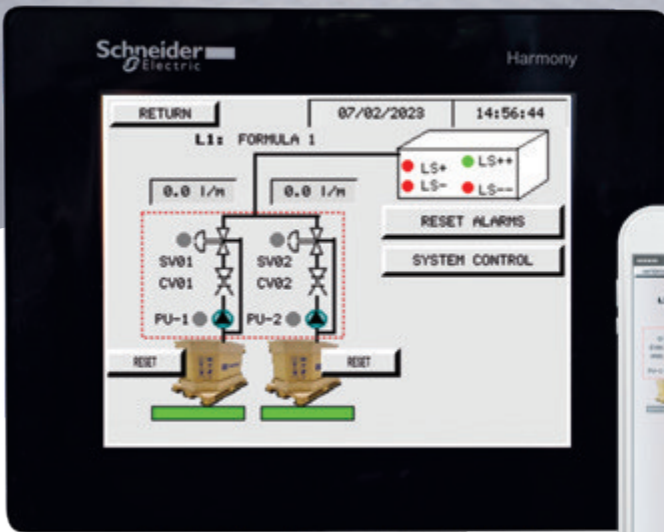
Versatile supply

5. GravineXt is suitable for tanks, octabins (with top or bottom connections), bag-in-boxes, and mixing systems of any sizes.

Monitoring GravineXt

6. Control panel with touch screen:

- in the storage room
- In the dialysis unit (optional)
- Displayed on a computer and/or phone (Ethernet/SIM card)



Ethernet connection

- Warning when octabin/bag-in-box is empty (with option to order a new one automatically)
- Notify failures to the technical service team
- History and failures of alarms

Why choose GravineXt?



Continuous supply allowed by automatic mode

- Automatic concentrate tank changeover
- Optional automatic start with reverse osmosis systems
- Remaining volume control in the octabin/bag-in-box

Quality & Safety:

- Double pump system per concentrate type, allowing high operational safety in the unlikely event one pump fails
- Dry running safety pumps
- Corrosion-free material polypropylene
- Low pressure system
- Four level sensors
- Alarm log

No single treatment consumable required

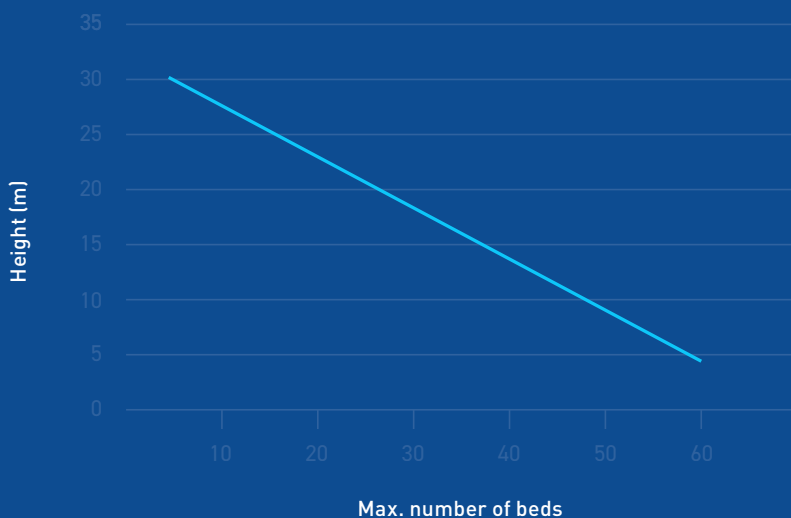
- No need for single-treatment acid concentrates, such as bags or canisters
- Reduces the time spent preparing each dialysis treatment
- Minimizes the ecological footprint
- Frees up storage space

Technical Data

Performance

Maximum pump capacity	5.7 L/min
Max. height (from pump module to gravity tank)	30 m
Max. distance (from pump module to gravity tank)	50 m
Gravity tank capacity	54 L or 80 L
Max. beds	30 (54 L) 60 (80 L)

Max. number of beds



Electrical data

Supply voltage	230 V / 50 Hz ($\pm 10\%$)
Max. electrical consumption	0.9 kW
Pre-fuse	16 A
	Leakage current protection 30 mA

Connections

Supply tanks connection	Hose connection DN 10x8, connectors
Loop (gravity tank to dialysis machines)	Hose connection DN10/ 14, connectors
Electrical connection	CEE 7 standard

Ambient temperature

Storage / transport	1-35°C
Operation	10-35°C
Relative humidity	< 95% without condensation
Air pressure	795-1062 hPa

Dimensions

Switch cabinet	480 x 690 x 240 mm
Gravity tank (54 L)	700 x (200 + 55 (vent filter)) x 400 mm
Gravity tank (80 L)	700 x (300 + 55 (vent filter)) x 400 mm
Pump module	710 x 400 x 160 mm

Concentrates: Make it easy!

From individual manipulation to automatic (central) supply with GravineXt

Save on manipulation

Nurses handle approximately 96 kg weekly - or, 4.6 tonnes yearly - of individual concentrate. This is reduced to 0 kg with GravineXt.



Save on packaging and concentrate

- Carton waste reduced by 40 to 48%
- Volume of plastic reduced by up to 78%
- Save on acid concentrates by 30%

